



**Proposed School Locations
for the state of Oregon
United States of America**

August 2018

for Silver Wolf Wushu

using SAITO software version 2.2.7.0 08/17/2018

title page image: the state insect of Oregon is the Oregon swallowtail butterfly, *Papilio oregonius*, shown here on an Oregon grape, *Mahonia aquifolium*, which is also the state flower. This accords well with the state motto, which is "*Alis Volat Propriis*" from Latin meaning "She flies with her own wings".

Geography

Our SAITO software views Oregon state as a rectangle 400 miles wide (east to west) and three hundred twenty miles high (north to south). Inside SAITO we have embodied a dislike for obliging people, with or without disabilities, to travel long distances, so the size of Oregon and the seasonal severity of the weather imposes some constraints on the solution.



Although there are school districts in the United States that allow students to be transported across county and even state boundaries SAITO treats states and provinces in isolation. This means any possible schools in, for example, Boise in Idaho, Vancouver in Washington, Eureka in California and so on would be ignored.

Oregon State is home to several First Peoples administrative areas. For those populations we are not knowledgeable about the frequencies of the 1400 genes we currently find of interest. Nor do we have any knowledge about education code specifically or special needs generally for those populations.

Demographics

We believe the state population is about 4,150,000 and that it has been growing at about 1% per year. The larger cities and towns are

Portland	647,805
Salem	167,419
Eugene	168,575
Gresham	111,523
Hillsboro	102,347
Beaverton	97,590
Bend	91,122
Medford	81,780

It has NOT been established that the medical conditions we find of interest are uniformly distributed, so Oregon could have anywhere between zero and 350,000 people with the disabilities we find of interest. We used 165,000 as a state-wide estimate. The SAITO software reduces that prevalence to compensate for people who are too remote, cannot walk, are not interested, prefer to take vitamin B-13 and so on.

For school locations the SAITO calculated recommendations are

1. Portland – 3 schools – the area includes Gresham
2. Salem – 1 school
3. Eugene – 1 school
4. Hillsboro – 1 school
5. Beaverton – 1 school
6. Bend - 1 school
7. Medford – 1 school

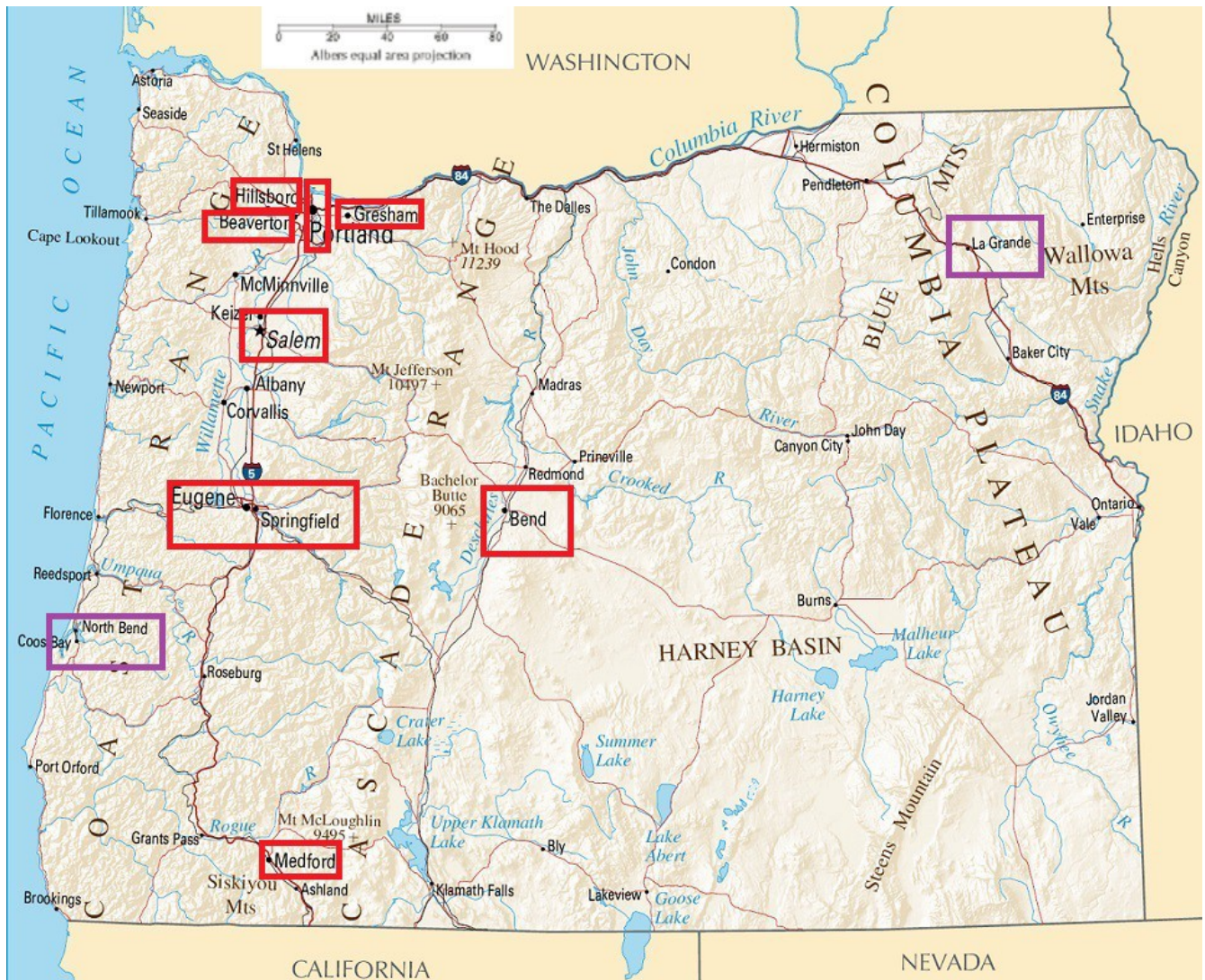
Probably dependent on subscriptions

8. La Grande – to cover Pendleton and Baker City
9. Coos Bay – to cover North Bend and Roseburg

We used the US Census (2010) data to estimate reservation populations

Burns Paiute	349
Coos, Lower Umpqua and Siuslaw	528
Coquille	258
Grand Ronde	55
Siletz	
Umatilla	2,927
Warm Springs	3,213

We have no appreciation of what interest there might be in our curriculum, and we have no information about population densities on tribal lands and reservations. The SAITO results are



The two major determinants for whether a school could or should be built at a smaller town like The Dalles or Klamath Falls is whether the tuition can cover rent, utilities and a teacher's salary. If not, it is possible for students to follow an internet broadcast from home, school or day care and send video recordings in to be graded. We would recommend daily filming and grading. Note that if the internet connection for the broadcast is interrupted the student can obtain the class video from the archives. Likewise, winter weather might delay the uploading of daily student videos so some tolerance and patience may be needed.